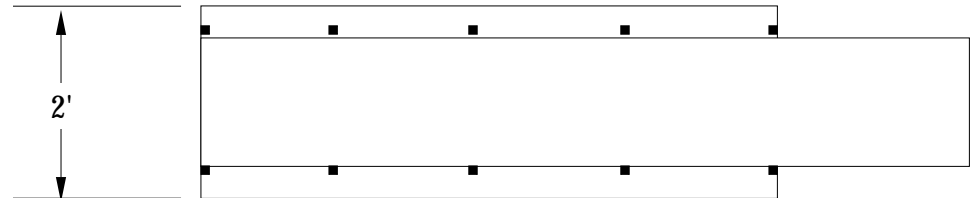
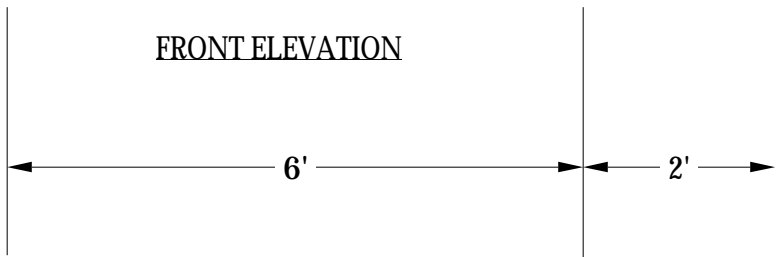


R & R FOR SL UNIT

NOTE: THESE ARE APPROXIMATE DRAWINGS. UNITS WERE REVISED IN SHOP AT OFNJ AND DESIGNER DID NOT REVISE ORIGINAL DRAFTINGS

FRONT ELEVATION



PLAN VIEW

OPERA COMPANY OF PHILADELPHIA  
**THE RAKE'S PROGRESS**  
BUILT BY OPERA FESTIVAL OF NEW JERSEY  
DESIGNER: RON KADRI